



# 40LCS-W Series

Chilled Water Fan Coil Unit

66,690-303,570 BTU/H



40LCS006W-010W



40LCS012W-024W



# Number Nomenclature

1	2	3	4	5	6	7	8	9	10	11	12	Digit Number
4	0	L	C	S	0	0	6	W	3	R	H	Standard Unit

<p><b>40LCS "Carrier"</b> Duct Packaged With Belt Drive Supply 380V / 3Ph / 50Hz.</p> <p>(IAQ-Medium Filter Merv14 PM2.5) CHW Fan Coil Unit</p>	<p><b>Unit type</b> H = Horizontal S = Short Horizontal</p>
<p><b>Size / Nominal Cooling Capacity</b> 006 = x 10,000BTU 008 = x 10,000BTU 010 = x 10,000BTU 012 = x 10,000BTU 015 = x 10,000BTU 018 = x 10,000BTU 024 = x 10,000BTU</p>	<p><b>Coil connection</b> R = Right coil connection (Std.) L = Left coil connection</p>
<p><b>Coil Type</b> W = Chilled Water Coil X = Direct Expansion Coil</p>	<p><b>Number of Row (Coil)</b> 3 = 3Rows 4 = 4Rows</p>

# Operation Feature



## HIGH PERFORMANCE, ENERGY SAVINGS, PM2.5 & COMFORT

Carrier's versatile belted fan coil units satisfy design requirements: With Carrier's 40LCS series fan coil units, Selection of 7 sizes covers nominal capacities from 2,100 to 8,000 cfm. These units are ideal for applications with a large common area such as restaurants, airports, sports arenas, stadiums, private boxes, gymnasiums, exercise areas, locker rooms, atriums and foyers, auditoriums, shopping malls, and casinos, to name a few. Carrier 40LCS series requires very little space and is easy to install. Piping, drain and wiring connections are readily accessible to save installation time and field labor expense.

### Give you design and equipment location flexibility

- Wide range of popular capacities for 2,100 - 8,000 cfm.
- Up to 7 sizes with Cabinet units.
- Select 3 or 4 row coils

### Select Carrier fan coils for easy, low cost installation

- Easy wiring, piping connections
- Mounting holes, slots speed hanging
- Requires no expensive ductwork
- Ideal for new construction or renovation

### Carrier fan coils save you service and maintenance expense

- Insulated drain pan
- Easy access to components
- Rugged construction
- Factory leak test
- Long life, heavy duty bearings

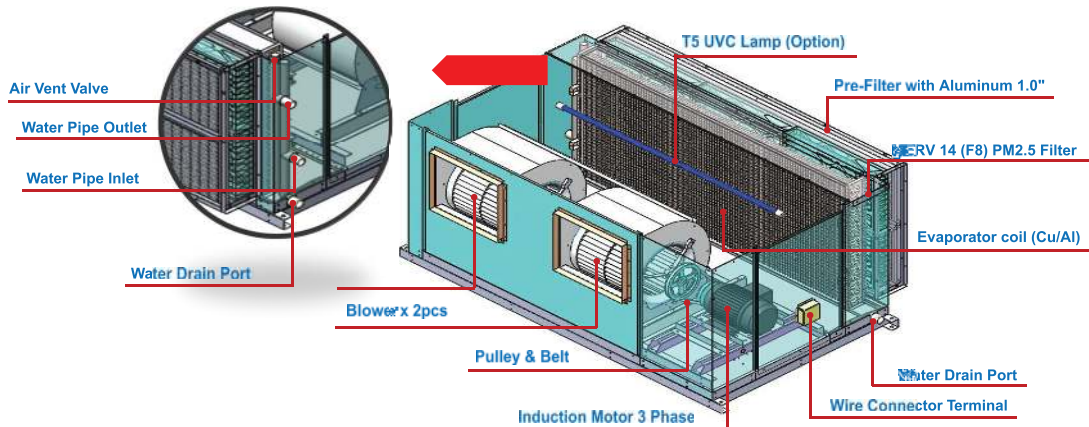
### MERV 14 (F8) PM2.5 Filter

- MERV 14 (F8) PM2.5 filter for high quality air supply, creates more comfort and healthy environment.



### Aluminium Filter

- For the rough dust filtration in aerial engineering devices of all kinds air conditioning systems in office, department stores schools laboratory etc.
- Wasable and re-usable / Low resistance
- Excellent frame retardant / Flexible, economical and practical



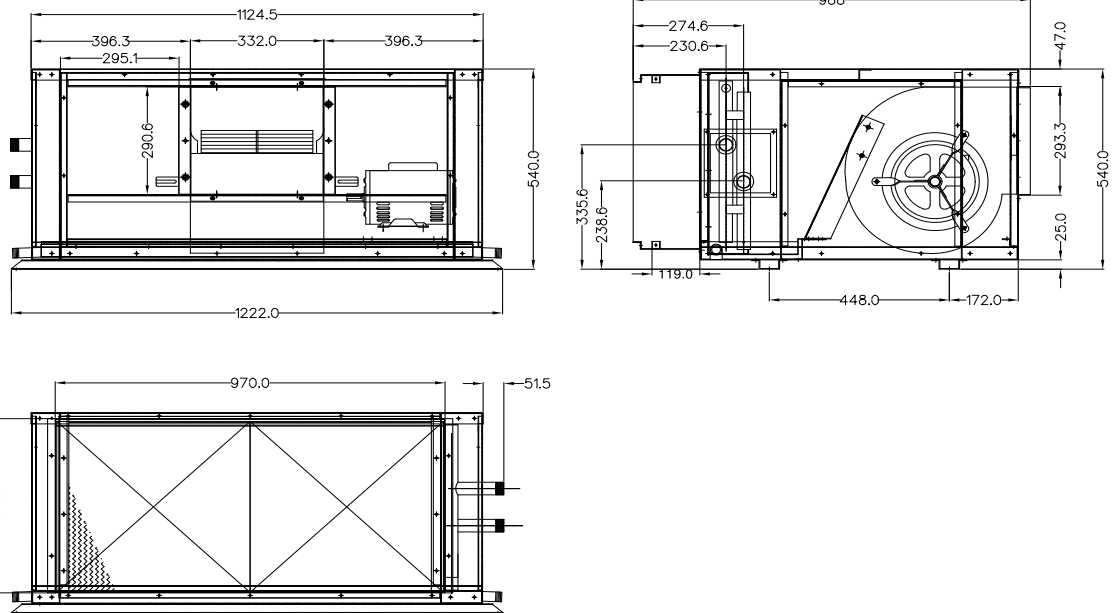
# Specification

Model		Duct Packaged Chilled Water Fan Coil Unit (With Belt Drive)																	
		40LCS006W		40LCS008W		40LCS010W		40LCS012W		40LCS015W		40LCS018W		40LCS024W					
Total Cooling Capacity		19.5		24.0		33.1		39.6		43.7		54.7		65.5		76.1		88.0	
Btu/hr.		66,690		81,900		112,870		135,140		148,970		186,470		223,410		256,300		303,570	
Power Supply		V/Ph/Hz		V/Ph/Hz		V/Ph/Hz		V/Ph/Hz		V/Ph/Hz		V/Ph/Hz		V/Ph/Hz		V/Ph/Hz		V/Ph/Hz	
Operation Current		2.67		3.60		4.80		4.80		8.67		8.67		8.67		8.67		8.67	
Air Flow Rate		Rate		Rate		Rate		Rate		Rate		Rate		Rate		Rate		Rate	
CFM		2,100		2,800		3,500		4,000		5,100		6,000		8,000		8,000		8,000	
Min-Ma. CFM		1800-2100		2300-2600		3200-3500		3500-4000		4500-5100		5600-6000		7500-8000		7500-8000		7500-8000	
Cooling Coil		3R/14 FPI		4R/14 FPI		3R/14 FPI		4R/14 FPI		3R/14 FPI		4R/14 FPI		3R/15 FPI		4R/14 FPI		3R/15 FPI	
Coil Face Area		4.44		5.31		7.15		5.31		8.00		10.22		12.00		12.00		14.06	
Tube / Fin Material Type		COPPER TUBE / ALUMINIUM FIN		COPPER TUBE / ALUMINIUM FIN		COPPER TUBE / ALUMINIUM FIN		COPPER TUBE / ALUMINIUM FIN		COPPER TUBE / ALUMINIUM FIN		COPPER TUBE / ALUMINIUM FIN		COPPER TUBE / ALUMINIUM FIN		COPPER TUBE / ALUMINIUM FIN		COPPER TUBE / ALUMINIUM FIN	
No. of Circuit		1		1		1		1		1		1		1		1		1	
Fan		Type		Type		Type		Type		Type		Type		Type		Type		Type	
Size		10"x10"		10"x10"		12"x12"		12"x12"		10"x10"		12"x12"		12"x12"		12"x12"		15"x15"	
QTY		1		1		1		1		2		2		2		2		2	
Revolution Speed		Std.		Std.		Std.		Std.		Std.		Std.		Std.		Std.		Std.	
Power Supply		V/Ph/Hz		V/Ph/Hz		V/Ph/Hz		V/Ph/Hz		V/Ph/Hz		V/Ph/Hz		V/Ph/Hz		V/Ph/Hz		V/Ph/Hz	
Type		TEFC - Totally Enclosed Fan Cooled		TEFC - Totally Enclosed Fan Cooled		TEFC - Totally Enclosed Fan Cooled		TEFC - Totally Enclosed Fan Cooled		TEFC - Totally Enclosed Fan Cooled		TEFC - Totally Enclosed Fan Cooled		TEFC - Totally Enclosed Fan Cooled		TEFC - Totally Enclosed Fan Cooled		TEFC - Totally Enclosed Fan Cooled	
Power		1.5(4P)		2(4P)		3(4P)		3(4P)		3(4P)		5.5(4P)		5.5(4P)		5.5(4P)		5.5(4P)	
Qty		1		1		1		1		1		1		1		1		1	
Revolution Speed		1,450		1,450		1,450		1,450		1,450		1,450		1,450		1,450		1,450	
Fan Pulley		100-1A-25		100-1A-25		125-1A-25		125-1A-25		150-1B-25		150-1B-25		150-1B-30		150-1B-30		225-1B-30	
Motor Pulley		90-1A-24		90-1A-24		90-1A-28		90-1A-28		125-1B-25		125-1B-25		132-1B-28		132-1B-28		150-1B-28	
Belt		A-29		A-28		A-30		A-30		B-43		B-43		B-47		B-49		B-45	
Belt Qty		1		1		1		1		1		1		1		1		1	
Type		Washable Aluminium Air Filter		Washable Aluminium Air Filter		Washable Aluminium Air Filter		Washable Aluminium Air Filter		Washable Aluminium Air Filter		Washable Aluminium Air Filter		Washable Aluminium Air Filter		Washable Aluminium Air Filter		Washable Aluminium Air Filter	
Qty Size		2...460x484x22		2...460x565x22		2...460x565x22		3...452x525x22		2...244x625x22		2...244x625x22		4...397x625x22		1...397x625x22		6...397x625x22	
(Width x Height x Thickness)		2...460x484x22		2...460x565x22		3...452x525x22		3...452x525x22		2...396x625x22		2...396x625x22		3...498x625x22		3...498x625x22		3...498x625x22	
Type		Medium Air Filter (MERV 14) F8		Medium Air Filter (MERV 14) F8		Medium Air Filter (MERV 14) F8		Medium Air Filter (MERV 14) F8		Medium Air Filter (MERV 14) F8		Medium Air Filter (MERV 14) F8		Medium Air Filter (MERV 14) F8		Medium Air Filter (MERV 14) F8		Medium Air Filter (MERV 14) F8	
Qty Size		2...460x480x95		2...460x565x95		2...460x565x95		3...452x525x95		2...244x625x95		2...244x625x95		4...397x625x95		1...397x625x95		6...397x625x95	
(Width x Height x Thickness)		2...460x480x95		2...460x565x95		2...460x565x95		3...452x525x95		2...397x625x95		2...397x625x95		3...498x625x95		3...498x625x95		3...498x625x95	
Type		PE Foam		PE Foam		PE Foam		PE Foam		PE Foam		PE Foam		PE Foam		PE Foam		PE Foam	
Thermal Conductivity		0.036 w/m.K		0.036 w/m.K		0.036 w/m.K		0.036 w/m.K		0.036 w/m.K		0.036 w/m.K		0.036 w/m.K		0.036 w/m.K		0.036 w/m.K	
Thickness		10.0mm.		10.0mm.		10.0mm.		10.0mm.		10.0mm.		10.0mm.		10.0mm.		10.0mm.		10.0mm.	
Gross weight		kg.		kg.		kg.		kg.		kg.		kg.		kg.		kg.		kg.	
Connecting Pipe		1" MPT		1" MPT		1-1/4" MPT		1-1/4" MPT		1-1/4" MPT		1-1/4" MPT		1-1/4" MPT		1-1/2" MPT		1-1/2" MPT	
Water In		1" MPT		1" MPT		1-1/4" MPT		1-1/4" MPT		1-1/4" MPT		1-1/4" MPT		1-1/4" MPT		1-1/2" MPT		1-1/2" MPT	
Water Out		1" MPT		1" MPT		1-1/4" MPT		1-1/4" MPT		1-1/4" MPT		1-1/4" MPT		1-1/4" MPT		1-1/2" MPT		1-1/2" MPT	
Drain O.D.		3/4" MPT		3/4" MPT		3/4" MPT		3/4" MPT		3/4" MPT		3/4" MPT		3/4" MPT		3/4" MPT		1" MPT	

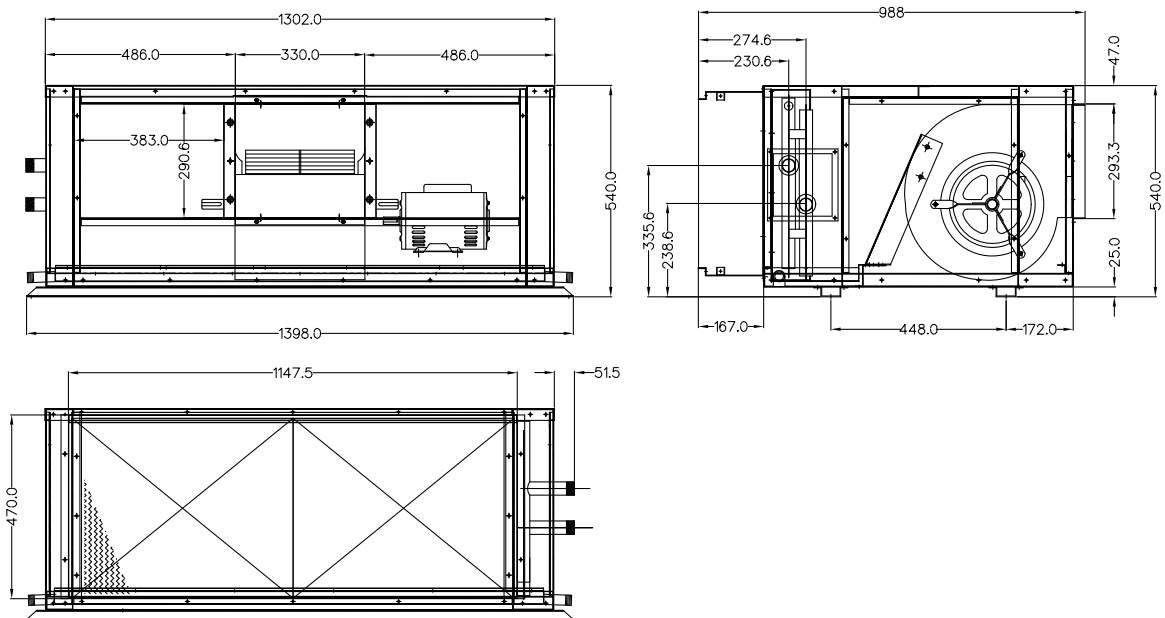
Remark... RLA : Rated Load Amps \*Nominal Capacity based on : Entering Air Temp. 80°F Db / 67°F Wb , At maximum air flow rate  
MPT : Male Pipe Thread \*Ent./Lug. Water Temp.44/54°F



## Unit dimensions

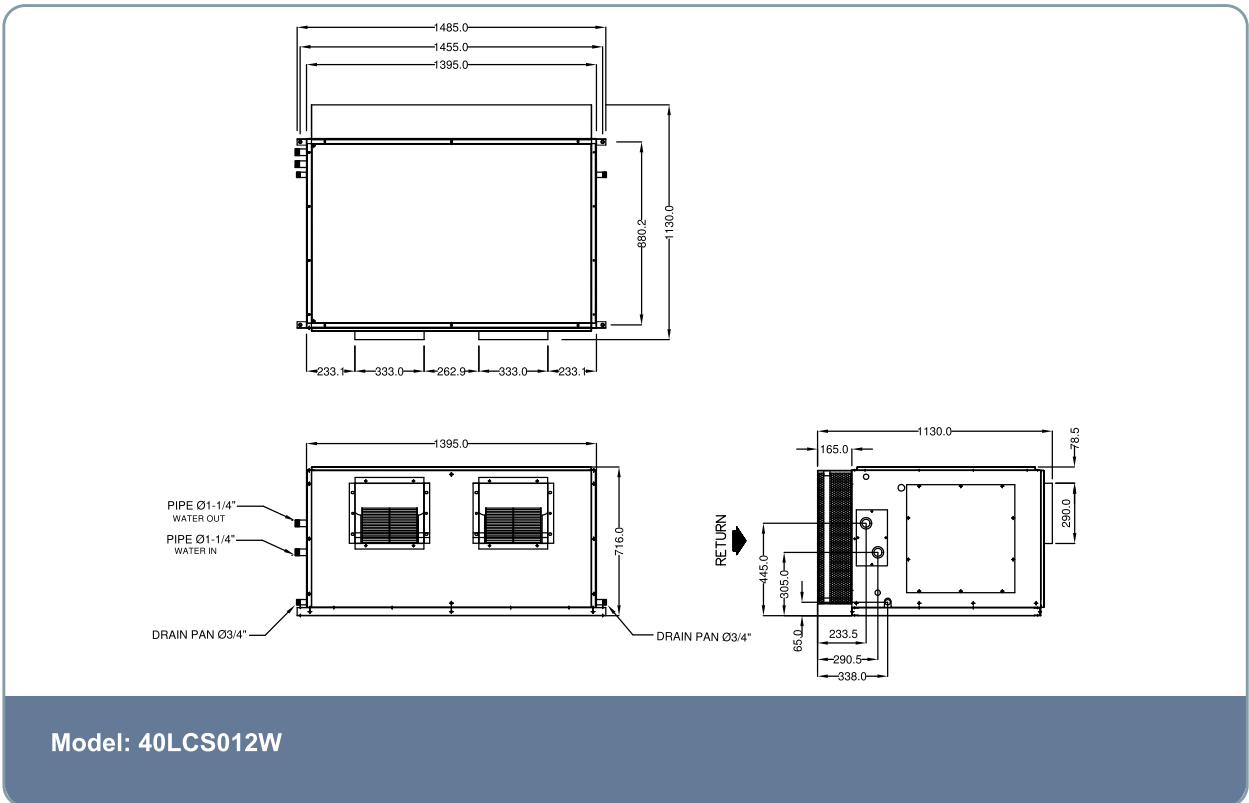
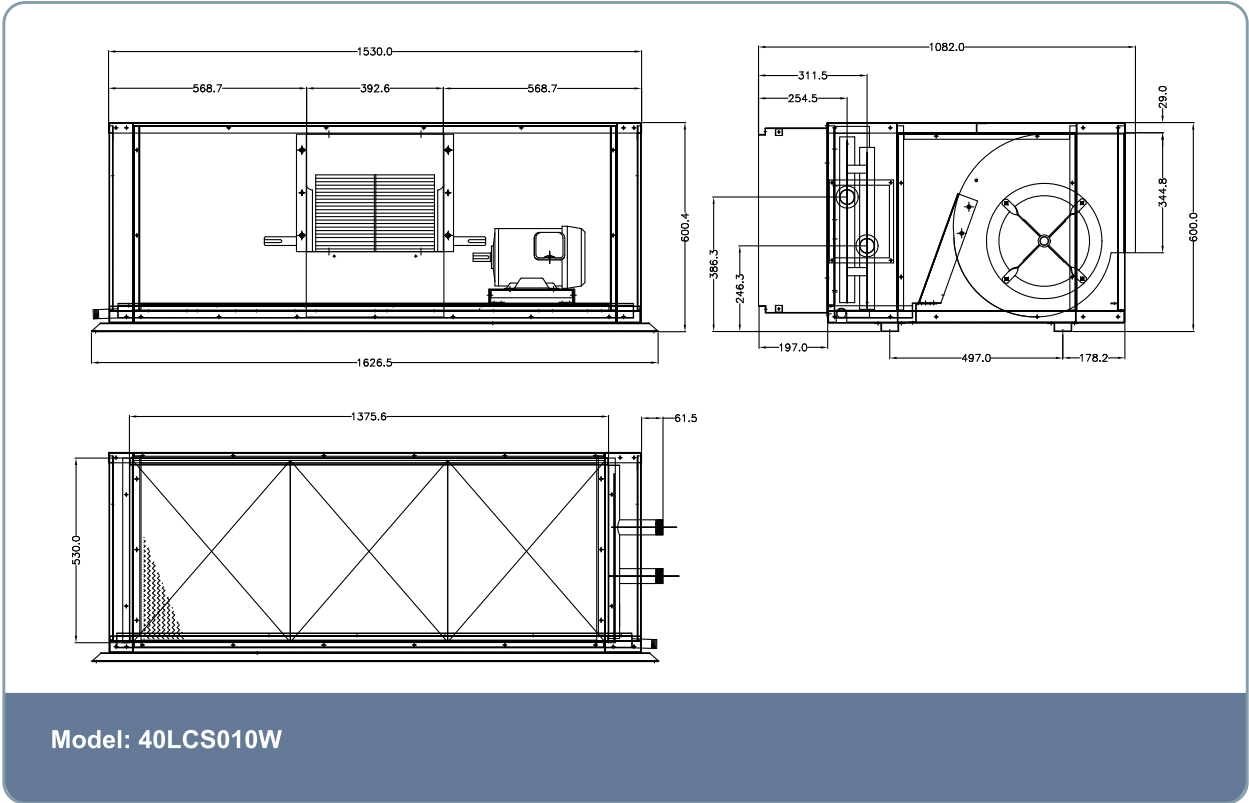


Model: 40LCS006W

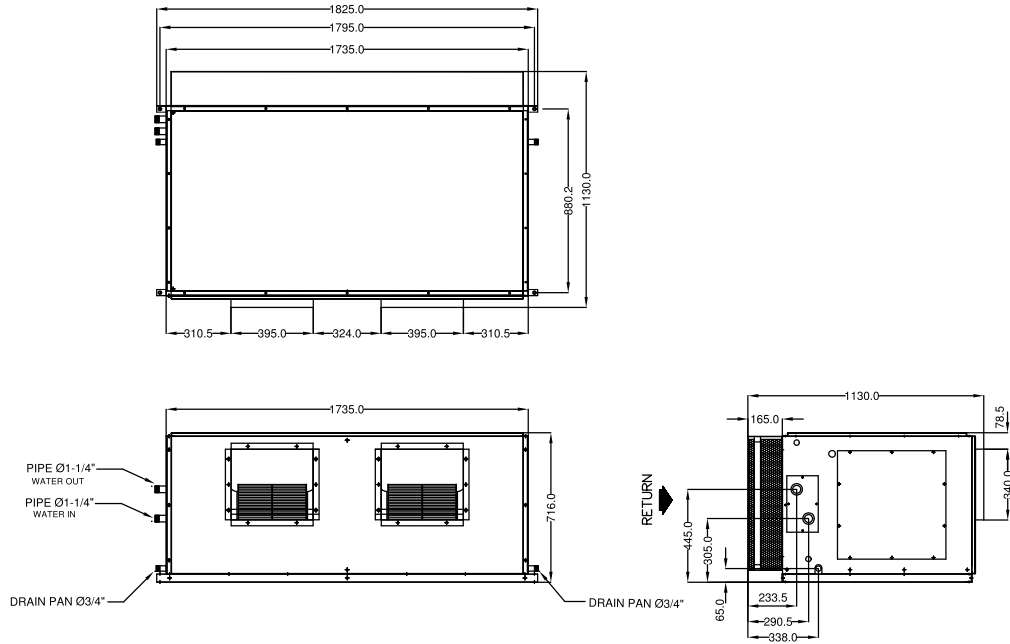


Model: 40LCS008W

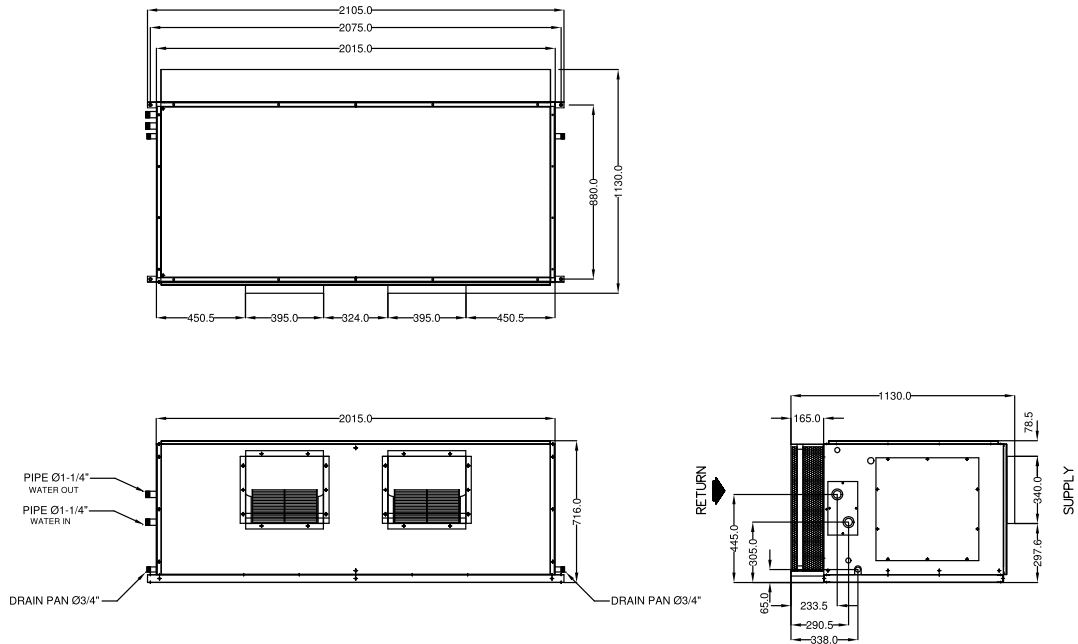
## Unit dimensions



# Unit dimensions

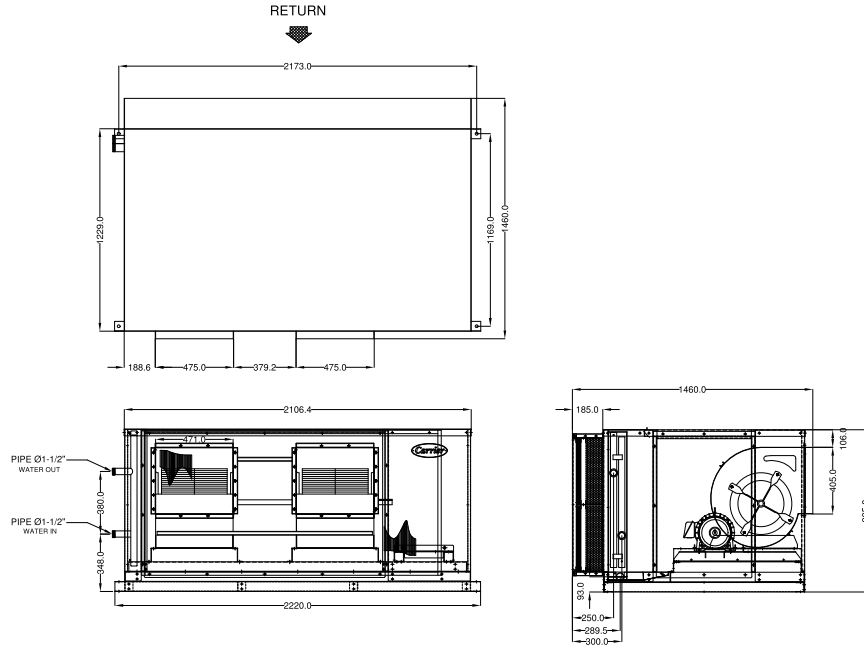


Model: 40LCS015W



Model: 40LCS018W

## Unit dimensions



Model: 40LCS024W

## Fan Performance

Model	Air Flowrate (cfm)	Internal Pressure Drop (in.wg)	Total Static Pressure (in.wg)											
			1.0		1.2		1.4		1.6		1.8		2.0	
			Fan Speed (rpm)	Power Consumption (kW)	Fan Speed (rpm)	Power Consumption (kW)	Fan Speed (rpm)	Power Consumption (kW)	Fan Speed (rpm)	Power Consumption (kW)	Fan Speed (rpm)	Power Consumption (kW)	Fan Speed (rpm)	Power Consumption (kW)
40LCS006-3	1800	0.82	909	0.40	987	0.47	1066	0.53	1149	0.60	1233	0.70	1318	0.80
	2100	0.87	921	0.53	999	0.59	1074	0.65	1141	0.74	1207	0.81	1277	0.88
40LCS006-4	1800	0.89	909	0.40	987	0.47	1066	0.53	1149	0.60	1233	0.70	1318	0.80
	2100	0.97	921	0.53	999	0.59	1074	0.65	1141	0.74	1207	0.81	1277	0.88
40LCS008-3	2300	0.85	938	0.62	1009	0.69	1080	0.76	1151	0.83	1214	0.91	1273	1.00
	2600	0.89	967	0.78	1034	0.86	1099	0.94	1161	1.02	1224	1.10	1288	1.18
40LCS008-4	2300	0.94	938	0.62	1009	0.69	1080	0.76	1151	0.83	1214	0.91	1273	1.00
	2600	1.01	967	0.78	1034	0.86	1099	0.94	1161	1.02	1224	1.10	1288	1.18
40LCS010-3	3200	0.86	798	0.82	868	0.93	934	1.05	992	1.16	1050	1.28	1112	1.41
	3500	0.90	806	0.96	874	1.08	939	1.2	1000	1.32	1055	1.45	1108	1.57
40LCS010-4	3200	0.95	798	0.82	868	0.93	934	1.05	992	1.16	1050	1.28	1112	1.41
	3500	1.00	806	0.96	874	1.08	939	1.2	1000	1.32	1055	1.45	1108	1.57
40LCS012-3	3500	0.85	943	0.83	1025	0.98	1111	1.1	1201	1.27	1296	1.42	1391	1.63
	4000	0.90	951	1.04	1037	1.16	1112	1.32	1184	1.49	1241	1.55	1325	1.74
40LCS012-4	3500	0.93	943	0.83	1025	0.98	1111	1.1	1201	1.27	1296	1.42	1391	1.63
	4000	1.01	951	1.04	1037	1.16	1112	1.32	1184	1.49	1241	1.55	1325	1.74
40LCS015-3	4500	0.85	819	1.06	1046	1.43	1027	1.59	-	-	-	-	-	-
	5100	0.91	816	1.25	893	1.45	979	1.69	1068	1.98	1159	2.31	-	-
40LCS015-4	4500	0.94	819	1.06	1046	1.43	1027	1.59	-	-	-	-	-	-
	5100	1.02	816	1.25	893	1.45	979	1.69	1068	1.98	1159	2.31	-	-
40LCS018-3	5500	0.87	822	1.39	893	1.6	965	1.82	1044	2.08	1131	2.39	1217	2.74
	6000	0.90	826	1.59	900	1.82	965	2.05	1030	2.28	1100	2.55	1176	2.85
40LCS018-4	5500	0.95	822	1.39	893	1.6	965	1.82	1044	2.08	1131	2.39	1217	2.74
	6000	1.01	826	1.59	900	1.82	965	2.05	1030	2.28	1100	2.55	1176	2.85
40LCS024-3	7500	0.87	709	1.78	776	2.05	838	2.36	897	2.68	914	2.64	977	2.97
	8000	0.90	712	1.98	776	2.24	838	2.54	896	2.88	904	2.82	961	3.21
40LCS024-4	7500	0.97	709	1.78	776	2.05	838	2.36	897	2.68	914	2.64	977	2.97
	8000	1.00	712	1.98	776	2.24	838	2.54	896	2.88	904	2.82	961	3.21

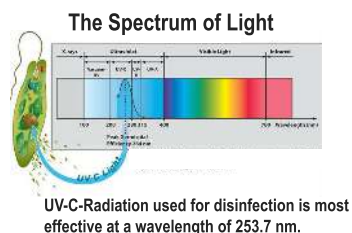


## Accessories (Optional)

### UV Lamps

In response to the current coronavirus epidemic situation, sterilization option using UltraViolet (UV) is available for FCU products. UV light for kill germs in a wide range of wavelengths between 200 to 400 (nm) which is highly effective in killing bacteria and reduces the formation of viruses by breaking down the molecular bonds that hold their DNA and RNA together.

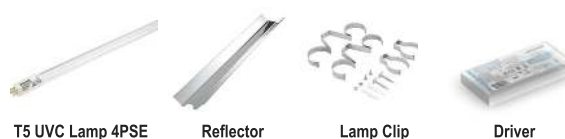
UV-C at this wavelength, is the wavelength that DNA can absorb well can be punched and disabled their growth. By destroying their DNA sequence When doing this, the virus will lose their ability to reproduce.



UV-C rays are not found in nature because these rays cannot pass through the ozone layer to the earth's surface. The use of this type of radiation to destroy the infection requires a source of radiation. Including mercury lamps



- Aluminum Frame
- Reflector of Aluminum Frame (for belt Protection)
- Driver



### Advantages of UV-C lamp

- 253.7nm UV-C lamp, no generate ozone.
- High-energy UV-C, effective life is up to 8000 hours.
- Stainless steel reflector enhances the radiation intensity and avoids direct exposure to the human body.
- Plug-in products for easy installation.
- External control box, 220VAC standard power supply, simple wiring.
- Able to kill bacteria in the air and prevent the virus from spreading through the host bacteria.

### UVC LAMP DATA

MODEL	HEAT EXCHANGER (Inch)		UVC LAMP Model	DISINFECTION At COIL SURFACE	IRRADIANCE		Remarks
	Height	Length			Min (uW/CM <sup>2</sup> )	Max (uW/CM <sup>2</sup> )	
40LCS006W3RH	18"	35.5"	TUV 36 T5 HO 4P-SE	>99%	694.03	1,360.30	UVC T5 75W 1 Lamp
40LCS006W4RH	18"	35.5"	TUV 36 T5 HO 4P-SE	>99%	694.03	1,360.30	UVC T5 75W 1 Lamp
40LCS008W3RH	18"	42.5"	TUV 36 T5 HO 4P-SE	>99%	619.25	1,360.30	UVC T5 75W 1 Lamp
40LCS008W4RH	18"	42.5"	TUV 36 T5 HO 4P-SE	>99%	619.25	1,360.30	UVC T5 75W 1 Lamp
40LCS010W3RH	20"	51.5"	TUV 36 T5 HO 4P-SE	>99%	851.46	1,721.90	UVC T5 75W 2 Lamps
40LCS010W4RH	20"	51.5"	TUV 36 T5 HO 4P-SE	>99%	851.46	1,721.90	UVC T5 75W 2 Lamps
40LCS012W3RH	24"	48"	TUV 36 T5 HO 4P-SE	>99%	817.87	1,902.51	UVC T5 75W 2 Lamps
40LCS012W4RH	24"	48"	TUV 36 T5 HO 4P-SE	>99%	817.87	1,902.51	UVC T5 75W 2 Lamps
40LCS015W3RH	24"	61.325"	TUV 64 T5 HO 4P-SE	>99%	444.02	1,032.36	UVC T5 145W 1 Lamp
40LCS015W4RH	24"	61.325"	TUV 64 T5 HO 4P-SE	>99%	444.02	1,032.36	UVC T5 145W 1 Lamp
40LCS018W3RH	24"	72"	TUV 64 T5 HO 4P-SE	>99%	786.91	1,925.14	UVC T5 145W 2 Lamps
40LCS018W4RH	24"	72"	TUV 64 T5 HO 4P-SE	>99%	786.91	1,925.14	UVC T5 145W 2 Lamps
40LCS024W3RH	33"	70"	TUV 64 T5 HO 4P-SE	>99%	769.45	1,827.18	UVC T5 145W 2 Lamps
40LCS024W4RH	33"	70"	TUV 64 T5 HO 4P-SE	>99%	769.45	1,827.18	UVC T5 145W 2 Lamps

# Intelligent Thermostat & Starter



**Variable Speed Drive (VSD)**  
 CARR-INTVSDITS003X (2-3 HP)  
 CARR-INTVSDITS075X (2-7.5 HP)  
 CARR-INTVSDITS010X (2-10 HP)



**Variable Speed Drive (VSD)**  
 CARR-INTVSDITS015X (15 HP)  
 CARR-INTVSDITS020X (15-20 HP)



**External display unit (Optional)**  
 Model : CARR-INTDT10ITSDP

## INTELLIGENT THERMOSTAT & VSD Starter

MODEL	CARR-INTVSDITS003X	CARR-INTVSDITS075X	CARR-INTVSDITS010X	CARR-INTVSDITS015X	CARR-INTVSDITS020X
POWER	2 - 3 HP (1.5 - 2.2 KW)	2 - 7.5 HP (1.5 - 5.5 KW)	2 - 10 HP (1.5 - 7.5 KW)	15 HP (11.2 KW)	15 - 20 HP (11.2 - 15 KW)
VOLTAGE	3 Phase , 380 - 415 VAC	3 Phase , 380 - 415 VAC	3 Phase , 380 - 415 VAC	3 Phase , 380 - 415 VAC	3 Phase , 380 - 415 VAC
STARTING TYPE	VSD	VSD	VSD	VSD	VSD
OVER / UNDER VOLTAGE	20%	20%	20%	20%	20%
AMBIENT OPERATING TEMPERATURE	10 - 50 °C	10 - 50 °C	10 - 50 °C	10 - 50 °C	10 - 50 °C
INDICATOR	7 - segment LED Display	7 - segment LED Display	7 - segment LED Display	7 - segment LED Display	7 - segment LED Display
DIMENSION (W x L x H)	493 X 121 x 377 mm.	493 X 121 x 377 mm.	494 X 121 x 377 mm.	490 X 220 x 500 mm.	490 X 220 x 500 mm.



**CARR-INTITS05X**  
 (0.75 - 5 HP) Direct on line



**CARR-INTITSY10X**  
 (5 - 10 HP) Star - Delta



**External display unit (Optional)**  
 Model : CARR-INTDT10ITSDP

## INTELLIGENT THERMOSTAT & STARTER , Direct on line, Star - Delta

MODEL	CARR-INTITS05X	CARR-INTITSY10X
POWER	0.75 - 5 HP (0.55 - 3.7 KW)	5 - 10 HP (3.7 - 7.5 KW)
VOLTAGE	3 Phase , 380 - 415 VAC	3 Phase , 380 - 415 VAC
STARTING TYPE	DOL	Star - delta
ACCURACY	± 1 %	± 1 %
OVER / UNDER VOLTAGE SETTING	5 - 20 %	5 - 20 %
VOLTAGE UNBALANCE SETTING	3 - 20 %	3 - 20 %
MACNETIC CONTACT RATING (AC-3)	9 Amp.	16 Amp.
PHASE PROTECTION MODE	Auto / Manual	Auto / Manual
AMBIENT OPERATING TEMPERATURE	10 - 50 °C	10 - 50 °C
INDICATOR	7 - segment LED Display	7 - segment LED Display
DIMENSION (W x L x H)	322 X 322 x 93 mm.	493 X 121 x 377 mm.

บริษัท แครีเยอร์ (ประเทศไทย) จำกัด  
 1858/63-74 ชั้น 14, 15  
 ด.เทพรัตน กม. 4.5 แขวงบางนาใต้  
 เขตบางนา กรุงเทพฯ 10260  
 โทร. 0-2090-9999 แฟกซ์: 0-2751-4778

Carrier (Thailand) Ltd.  
 1858/63-74 , 14<sup>th</sup>, 15<sup>th</sup> Floor,  
 Debaratna Road, Km.4.5, Bangna Tai,  
 Bangna Bangkok 10260 Thailand  
 Tel. 0-2090-9999 Fax: 0-2751-4778



YOUR CARRIER MAN :

บริษัทฯ ขอสงวนสิทธิ์ที่จะเปลี่ยนแปลงรายละเอียดข้างต้น โดยไม่ต้องแจ้งให้ทราบล่วงหน้า  
 Carrier reserves the right to make changes in specifications without prior notice.